

Parent Information Evening

Welcome to Year 5





The Senior Team

**Katie
Tramoni**

Headteacher



**Geraldine
Valentin**

Deputy
Headteacher
Grove site



**Su
Larson**

Deputy
Headteacher
Broadway site



**Maggie
Smith**

Assistant Head
for Year 5 and 6



**Diane
Harris**

Assistant
Headteacher
Years 3 & 4



**Tanya
Gallagher**

SENCO



The Year 5 Team



Miss Dawe
5SD



Mrs McDonald
Mrs Yates
5MY



Mrs Anwar
5FA



Mr Kerller
5WK



Ms Nwaka



Mrs Ahmed



Miss Shepherd



Rooted in our Christian foundation, we are an aspirational community loving and serving God. We seek to recognise and develop our **unique gifts** in accordance with the biblical principles of inclusiveness, tolerance and love, preparing children to be educated citizens in a global world.

Each of you should use whatever gift you have received to serve others, as faithful stewards of God's grace in its various forms

I Peter 4:10



School Website

[ABOUT](#)[NEWS](#)[CURRICULUM](#)[YEAR GROUPS](#)[PARENTS](#)[CONTACT](#)

TEACHING & LEARNING

[Curriculum Intent & Implementation](#)[Our School Day](#)[Global Learning](#)[Home Learning](#)[Remote Learning](#)[Online Safety](#)[Google Classroom](#)[Spellings](#)

CORE SUBJECTS

[Phonics](#)[Reading](#)[Writing](#)[Mathematics](#)[Religious Education](#)[Science](#)

FOUNDATION SUBJECTS

[Art](#)[Design Technology](#)[Geography](#)[History](#)[Computing](#)[PSHE](#)[Music](#)[Physical Education](#)[Languages](#)

EXTENDED SCHOOL

[Our Offer](#)[School Clubs](#)

Behaviour





Online Safety



Attendance



STRIVE TO BE ON TIME

**EVERY
MINUTE
COUNTS**

MINUTES LATE	IMPACT ON YOUR ATTENDANCE IN A YEAR
5 MINUTES A DAY =	3.4 days 98.4% attendance
10 MINUTES A DAY =	6.9 days 97.6% attendance
15 MINUTES A DAY =	10.3 days 94.6% attendance
20 MINUTES A DAY =	13.8 days 92.9% attendance
30 MINUTES A DAY =	20.7 days 89.2% attendance

175 non school days a year 175 days to spend on family time, visits, holidays, shopping, household jobs and other appointments					
365 days in each year	190 School days in each year	10 days absence 180 days of education	19 days absence 171 days of education	29 days absence Half a term missed 161 days of education	38 days absence 152 days of education
					47 days absence 143 days of education
	100%	95%	90%	85%	80%
					75%
GOOD Best chance of success Gets your child off to a flying start		WORRYING Less chance of success Makes it harder to progress		SERIOUS CONCERN Not fair on your child Court action	

Collective Worship at CtS



Monday: Christian values worship

Tuesday: Class collective worship

Wednesday: Class reflection on a hymn

**Thursday: Mass or Father Richard
video**

Friday: Celebration worship

Year 6 Leaver Destinations 2023



Ada Lovelace C of E High School

Ark Acton Academy

Ark Soane Academy

Brentside High School

Drayton Manor High School

Durston House

Ealing Fields High School

Elthorne Park High School

Gunnersbury Catholic School

Hampton School

Lady Margaret School

St Benedict's School

Cardinal Vaughan

Cardinal Wiseman

Ellen Wilkinson

The Godolphin and Latymer School

The Green School for Girls

Twyford High School

William Perkin C of E High School

School Data 2022/2023



KS2	EXS	National 2023	GDS	National 2022	Progress Where 0 is average progress nationally
Reading	89%	73%	48%	28%	+2.9
Maths	84%	73%	42%	23%	+1.8
Writing	86%	71%	38%	13%	+3.5

A Typical Day in Year 5



School gates open at 8:30

Lessons start at 8:45

Breaktime is at 10:30 and 2:10

Lunch is 12:20 – 1:05

School finishes at 3.10

Year 5 Curriculum



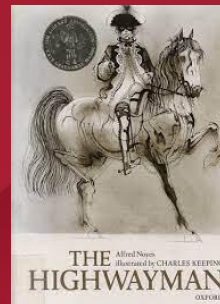
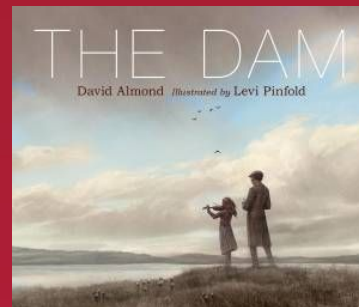
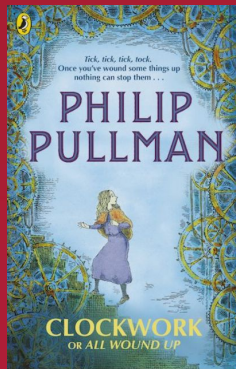
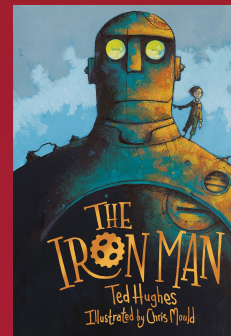
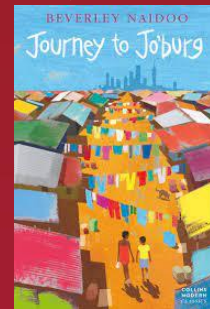
CURRICULUM MAP 2023-24

YEAR 5	Autumn 1		Autumn 2		Spring 1		Spring 2		Summer 1		Summer 2	
Christian Values	Friendship and Endurance		Love and Peace		Hope and Wisdom		Justice and Service		Trust and Humility		Creation and Thankfulness	
Global Learning	Equal Opportunities				Migration				Inspirational Individual: David Attenborough			
	Discussion and debate of current affairs											
English	Journey to Jo'Burg by Beverley Naidoo		Clockwork by Phillip Pullman		The Rabbits by Shaun Tan		Iron Man by Ted Hughes		The Highwayman by Alfred Noyes		The Dam by David Almond	
	Writing: spelling and handwriting, vocabulary, punctuation and grammar, composition, editing and performing											
	Reading: word reading, making inferences, comprehension, language and effect											
Maths	Number	Number	Number	Number	Number: Decimals and Percentages	Number: Decimals	Number	Decimals	Number	Decimals	Number	Decimals
	Place Value	Multiplication	Multiplication and Division	Multiplication and Division	Measurement	Geometry	Geometry	Geometry	Geometry	Geometry	Geometry	Geometry
	Addition	Division	Fractions	Fractions	Perimeter and Area	Properties of Shape	Properties of Shape	Properties of Shape	Properties of Shape	Properties of Shape	Properties of Shape	Properties of Shape
	Subtraction	Fractions	Decimals and Percentages	Decimals and Percentages	Statistics	Position and Direction	Position and Direction	Position and Direction	Position and Direction	Position and Direction	Position and Direction	Position and Direction
Arithmetic and Number Facts: Times Tables, Square and Cubed Numbers												
Science	Physics: Earth and Space How do the Earth, Moon and Sun work together?						Physics: Mechanical Devices and Forces How do forces impact our everyday lives?		Biology: Changing Habitats Why must we look after our planet?		Biology: Life Cycles How do living things change throughout their life cycle?	
	Chemistry: Properties and Changing Materials How can you separate and change materials?											
Religious Education	God's Gift of Creation Why did God create the World?		Celebrating Christmas through Music and Art How is faith expressed?		Judaism What does it mean to be a Jewish person?		Reconciliation 2 What is true forgiveness?		Inspirational People What does it mean to be an inspirational person?		The Journey of Life and Death Is there life after death?	
Humanities	Rivers: How do rivers shape the landscape and how does human settlement impact rivers?						North America: What are some of the variations in geographical features and climate across the continent of North America?					
	Anglo Saxons and Vikings: How did invasion and settlement change Britain after the Romans left?						Mayan Civilisation: How does the way the Mayans lived compare to the way people were living in Britain at the time?					
PSHE	Health and Wellbeing				Living in the Wider World				Relationships			
	Healthy Eating		Keeping our Minds and Bodies Healthy		Budgeting		Mental Health		Positive Friendships		Growing Up	
	What makes a healthy meal?		What can we do to stay healthy and safe? How can people be affected by bullying?		What do we mean by budgeting?		How can we look after our mental health?		How can we have healthy friendships and deal with peer pressure?		What emotional and physical changes occur during puberty?	
Physical Education	Health Related Exercise		Invasion Games		Gymnastics: Counter balance and tension				Athletics		Cricket and Rounders	
	Net and Wall: Tennis		Hockey and Basketball/Netball		Invasion Games: Dodgeball, Football, Basketball/Netball				Running, Jumping and Throwing		OAA Residential	
Art	Portrait Drawing - chalk & charcoal, oil pastels Abstract portraits inspired by Pablo Picasso				Sculpting with clay - Viking Heads with inspiration from Roy Mueck Still Life inspired by Paul Cézanne and Roy Lichtenstein				Still Life inspired by Paul Cézanne and Roy Lichtenstein Pointillism inspired by George Seurat and Keith Haring			
Computing	Web Designers What can be done to check the plausibility and quality on information we find online?				Game Developers Can games be improved using iterative development techniques?				Programmers 2 What can micro bits be used for?			
	Bread Making from across the Globe: Cooking and Nutrition				Building and Controlling Robots: Programming, monitoring and controlling products				Moving Toys Mechanical Systems - cam mechanisms			
French	En Route pour L'école Around our school, time		Le Météo du jour Describing the Weather		Les Animaux et leur habitat Animals and their habitats, time				Manger et Bouger Food and Drink			
	Reading Notation: Rhythm		Reading Notation: Pitch		Instrumental Performance		Composing and Improvising		Creating and Performing		Musicianship	
Music	Reading Notation: Time Signatures		Developing Sight Reading Skills: Melodies (Glockenspiel)		Pop Music: Arrangements and Improvisation (Ukulele)		Creating Music for Film and TV: Character, Atmosphere and Environment		Exploring Classical Music: Ensemble Performance		Becoming Musicians: Chords and Triads	

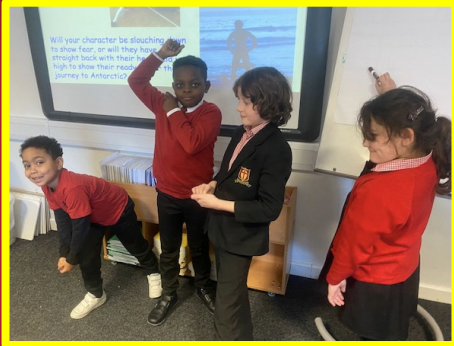
English Texts

- ❖ Journey to Jo'burg by Beverley Naidoo
- ❖ Clockwork by Philip Pullman
- ❖ Iron Man by Ted Hughes
- ❖ The Rabbits by Shaun Tan
- ❖ The Highwayman by Alfred Noyes
- ❖ The Dam by David Almond

Over the year we will be writing in a the style of a huge range of genres such as setting descriptions, poetry, stories, diary entries, information texts, explanation texts, instructions, letters, debates and more!



English and Writing




Explore Week

Let's look back at the vocabulary we generated over the last week and give semicolons a go!

; Let's practice some together from our last few lessons!

On white boards write two sentences (including semicolons) for each part of the journey with your partner. Then, neatly copy them into your English book.



Skills Week

Let's model a paragraph together

As concerned from fell upon Naledi's face. There was only one worry that troubled her sleepless nights: her sister, Dineo. Naledi couldn't stand to see her little sister fight an undefeatable battle with her illness. Her mind drifted to the baby that had died in the village last week and to think that this could happen to Dineo frequently haunted her. She knew she needed to find a doctor. But how could she afford one? Mma worked for away in the city and Naledi kicked herself for even thinking about asking Mma for help. She examined her surroundings, from her brother, Tiro sleeping on the unswept floors, to the rusty, corrugated roof and gave a big sigh. However when her eyes rested on Dineo, her mind was made: a journey to Johannesburg.

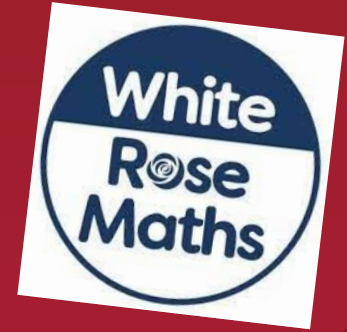
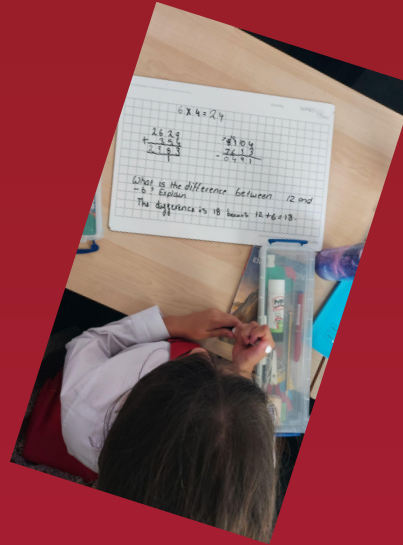
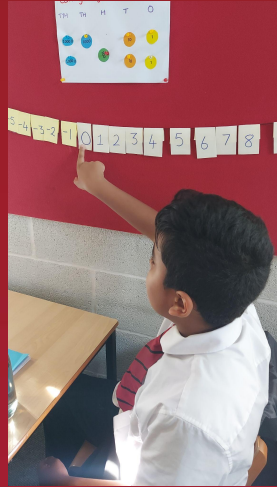
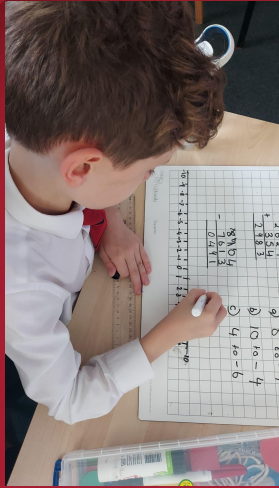
The two siblings were accustomed to walking long distances but they never anticipated the length of the journey they embarked on that morning. Naledi and Tiro gazed at the winding road that laid ahead. It seemed infinite. There wasn't an inch of shade. The road was silent and desolate with the occasional car or truck speeding past them, blowing dry dust in their faces. Every step on the uneven and broken ground burnt the soles of their feet. Their bodies grew heavy as their little legs slowed them down; exhaustion enveloped them.

- Powerful adjectives
- Powerful verbs and adverbs
- Figurative language
- The 5 senses
- A range of adverbials for cohesion
- A range of punctuation including semi colons

What is underlined?

Editing and
Publishing Week

Maths



Place value, times tables, addition and subtraction, fractions, decimals and percentages as well as shape and measurement!

	Week 1	Week 2	Week 3	Week 4	Week 5	Week 6	Week 7	Week 8	Week 9	Week 10	Week 11	Week 12
Autumn term	Number Place value FREE TRIAL VIEW		Number Addition and subtraction VIEW		Number Multiplication and division A VIEW			Number Fractions A VIEW				
Spring term	Number Multiplication and division B VIEW		Number Fractions B VIEW		Number Decimals and percentages VIEW		Measurement Perimeter and area VIEW		Statistics VIEW			
Summer term	Geometry Shape VIEW		Geometry Position and direction VIEW		Number Decimals VIEW		Number Negative numbers VIEW	Measurement Converting units VIEW		Measurement Volume VIEW		

Further Home Maths Support Recommendations

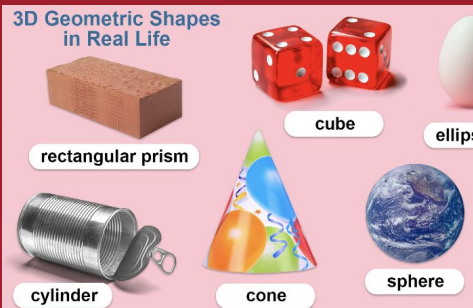
Board games



Exploring fraction in everyday life - Price of sale items, pieces of food divide up, clocks.



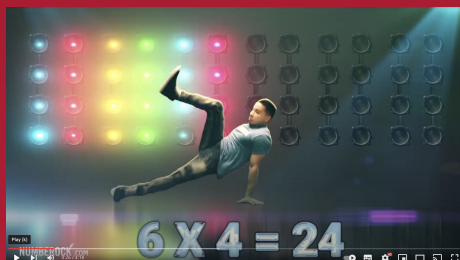
Recognising 2D and 3D shapes around you



Statistics - Get children planning timings of journeys, reading bus/train timetables

Bus Stop	Day Times						
St Paul's Cathedral	08:34	10:00	11:45	13:45	14:30	16:30	18:36
Tower Of London	08:46	10:12	11:57	13:57	14:42	16:42	18:48
Tower Bridge	08:48	10:14	11:59	13:59	14:44	16:44	18:50
The Shard	08:56	10:22	12:07	14:07	14:52	16:52	18:58
Tate Modern	09:03	10:29	12:14	14:14	14:59	16:59	19:05
London Eye	09:12	10:38	12:23	14:23	15:08	17:08	19:14
Westminster	09:17	10:43	12:28	14:28	15:13	17:13	19:19
Downing Street	09:23	10:49	12:34	14:34	15:19	17:19	19:25
Buckingham Palace	09:30	10:56	12:41	14:41	15:26	17:26	19:32
Hyde Park	09:38	11:04	12:49	14:49	15:34	17:34	19:40
Oxford Circus	09:45	11:11	12:56	14:56	15:41	17:41	19:47
Piccadilly Circus	09:51	11:17	13:02	15:02	15:47	17:47	19:53
Covent Garden	10:03	11:29	13:14	15:14	15:59	17:59	20:05

Multiplication practical
mixed order..



Multiplication songs
www.numberock.com

Measures- cooking, using measuring jugs (ml/l), weighing (g/kg), helping with the washing up! (capacity)



Time am/pm, 24 hour, analogue, digital, having a watch

Humanities Knowledge Organisers (RE, history, geography)



Year 5 Geography: How do rivers shape the landscape and how does human settlement impact rivers?

Key Topics: Water Cycle, features of a river, river pollution, investigating a local river, rivers of the UK, the River Nile

Key Vocabulary

condensation	is when water vapour cools and turns back into a liquid.
current	The current is the direction of flow of water in a river.
dam	A dam is a barrier built across a river to stop the flow and to store water, e.g. the Aswan dam across the River Nile in Egypt.
delta	A delta is a large flat piece of land created by the river that is shaped like a triangle (the shape of the Greek letter delta).
deposits	Material such as earth, sand or stones, dropped by a river.
erosion	is the wearing away of something, like the land by a river.
estuary	An estuary is a body of water where salt and freshwater mix.
evaporation	is when liquid water turns into a gas, water vapour.
infiltration	is when water soaks through the ground through soil and rock and runs off the ground into rivers and into the sea.
meanders	Bends in a river are called meanders.
mouth	The place where a river reaches the sea is the mouth.
pesticides	A pesticide is a substance used by farmers to kill unwanted insects and pests which harm their crops.
precipitation	is when water droplets fall from the clouds in the form of rain, snow, hail or sleet.
reservoir	A large lake (natural or man made) that is used as a water supply is called a reservoir.
source	The start of a river is its source.
toxin	A toxin is a poison.
transpiration	is when liquid water in plants becomes warm and turns back into a gas, water vapour, leaving the plant through its leaves.
tributary	is a smaller river or stream flowing into a larger river or lake.

The Water Cycle

Geographical Skills

Grid references help us to find places on a map. The first part of the Grid reference tells you how far **ACROSS** the map to go. The second part of the grid reference tells you how far **UP** the map to go.

In a **four figure grid reference** the numbers refer to the grid lines on the map. A square is identified by the grid lines which cross in the **bottom left hand corner** of the square.

Six figure grid reference pinpoints a place on a map more exactly by dividing the square into tenths. This means a third and sixth number can be added which show the location of the centre of the place.

What is the six figure grid reference for the bus station?

The four figure grid reference for the bus station is **7725** (taken from the bottom left hand corner of the square it is in).

The six figure grid reference for the bus station is **777258**. (the exact location).



PSHE



Autumn

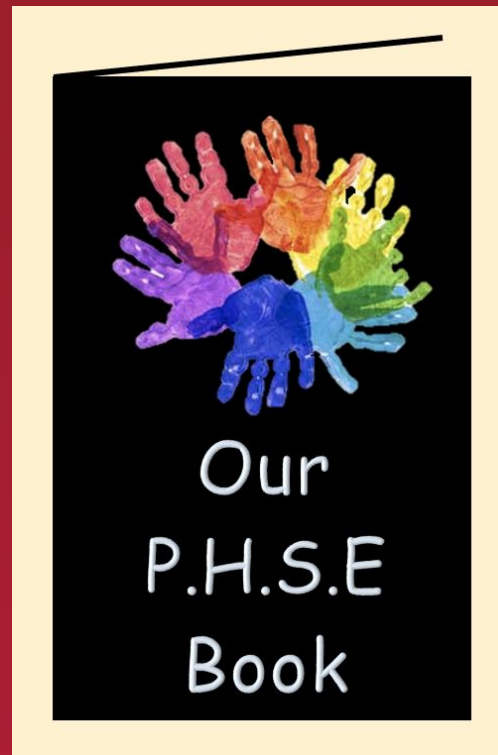
Healthy Eating
Keeping our Minds and Bodies Healthy

Spring

Budgeting
Mental Health

Summer

Positive Friendships
Growing Up



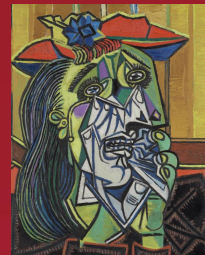
The goal of PSHE is to equip young people with the knowledge, understanding and practical skills to live healthily, safely, productively and responsibly. [Ofsted, 2016]

Other foundation subjects

- PE
- Music
- DT
- Computing
- French *Ms Amarouche*
- Art *Ms McCulloch*
- Global Learning



Learning to play glockenspiel



Portrait Drawing inspired by Picasso



Web designers



Fortnightly French lessons- Bonjour!



Sculpting Viking Masks



Global Learning - Migration

Educational Visits and Workshops

River Brent - Geography - Rivers

British Museum - History - Vikings

Science Museum - Science - Forces

Local Synagogue - RE - Judaism

Chicks - Science - Life Cycles

End of Year 5 Residential.



Ideas to support the curriculum



Vikings and Anglo Saxons

- Visit Jorvik centre - York
- The British Museum exhibition
- Book- 'The Vikings: Raiders, Traders and Adventurers!' by Marcia Williams

Ancient Mayans

- Visit the British Museum
 - Book- 'The History Detective Investigates: Mayan Civilization'
- Book- The Maya and Chichén Itzá (Time Travel Guides)

Earth & Space

- Visit the National Space Centre in Leicester
- Science Museum
- Local planetarium

Rivers

- Visit local rivers, Brent, Thames, Beverley Brook, Richmond Park .
- Talk about the rivers you see when travelling!

Home Learning Overview

Mathletics



	Out	In
Science investigations	Friday (fortnightly)	Following Friday
Spellings	Wednesday	Following Monday
Mathletics	Monday	Thursday
Reading 5 times per week	Monday	Following Monday



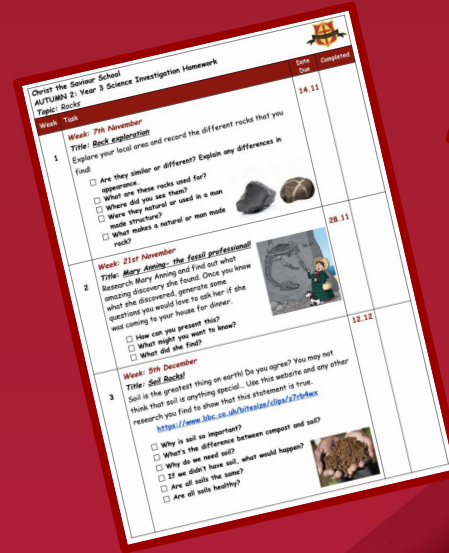
TTRS to be accessed
several times
throughout the week

Science Home Learning

- Sent out on Friday (fortnightly) for the following Friday.
- Home learning will be available on Google Classroom

Helpful websites to enrich science learning:

- Science Kids
- BBC Bitesize Science
- NASA Kids' Club
- BrainPOP Science
- National Geographic Kids
- Discovery Kids
- Climate Kids
- Happy Learning



Reading Records



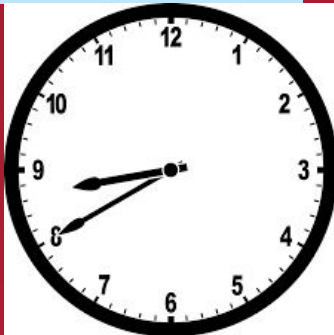
- Children should bring their red reading records to school every day.
- These should be signed at least five times a week by a parent, who has listened to their child read.
- All learning at CtS centres around reading.

Reading to your child

Even when children can read to themselves, reading to them is still hugely beneficial. Children need to hear a new word 12 times before they can use it themselves!



Ways to Help



UKS2 Residential Croft Farm, Gloucestershire

[LOOK ON THEIR WEBSITE](#)



UKS2 Residential Croft Farm, Gloucestershire

[LOOK ON THEIR WEBSITE](#)



Mon 1st – Wed 3rd
July 2024

or

Wed 3rd - Fri 5th July
2024

UKS2 Residential Croft Farm, Gloucestershire

[LOOK ON THEIR WEBSITE](#)



Deposit by Sept 13th	£45
Payment by:	Amount
Oct 31st 2023	£45
Nov 30th 2023	£40
Dec 30th 2023	£30
Jan 31st 2024	£30
Feb 28th 2024	£40
Mar 31st 2024	£45

£295 in total.

£200 for PPG pupils

Deposit paid by this
Wednesday.

Please contact Mrs Smith
for any queries.

UKS2 Residential Croft Farm, Gloucestershire

[LOOK ON THEIR WEBSITE](#)



How can you help?





Parent Volunteers

Monday, 9th October 2pm
Broadway Site



Thank you for coming!