



Year 6 RE **Jesus, Son of God**

How can Jesus be both divine and human?



Key Vocabulary

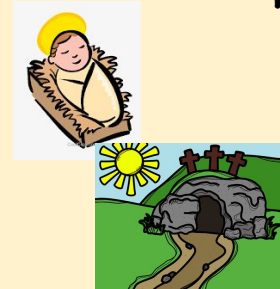
atheism	The belief that God or spiritual powers do not exist.
divine	Divine means 'of God'.
incarnation	This incarnation is when Jesus took on flesh and became human.
multifaith	A multifaith society is one in which people of many different religions live side by side
prophet	Someone who speaks God's words.
trinity	The three persons of God; the Father, the Son and the Holy Spirit

Social Science - Living

We live in a **multifaith** society, where people of all different religions can live freely and peacefully side by side. It is important that we respect people of all faiths and worldviews. Everyone should be treated equally and fairly, whatever their beliefs.



Theology - Believing



Christians believe that Jesus is God **incarnate**: God in human flesh. Jesus performed many **miracles**, to show that he was God. Jesus died on a cross like a human but then rose from the dead and went back to heaven to be with his Father.

Muslims believe that Jesus was a **prophet**. Many of Jesus' miracles are recorded in the Qu'ran but Muslims do not believe that Jesus died on the cross or that he was the Son of God.



Atheists believe there is no God of any kind, no spiritual forces or higher powers and no heaven. Atheists therefore do not believe that Jesus was divine.



Philosophy - Thinking

How can Jesus be both God and man? How did Jesus perform miracles? Why did some people not believe in Jesus when they saw his miracles? What do people believe about Jesus today?



God



Creation



Fall



People of God



Incarnation



Gospel



Salvation



Kingdom of God