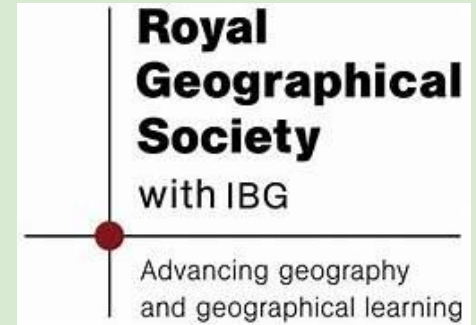


KS2 are invited to get involved in an exciting **Geography Competition** over the summer holidays!



The theme is "**Understanding islands**".

This is a chance to explore one of the Earth's 670,000 islands - what makes it unique, what are its similarities and differences with other islands and what challenges it faces.



The best ten CTS entries will represent our school and get sent into the

**RGS national competition.**



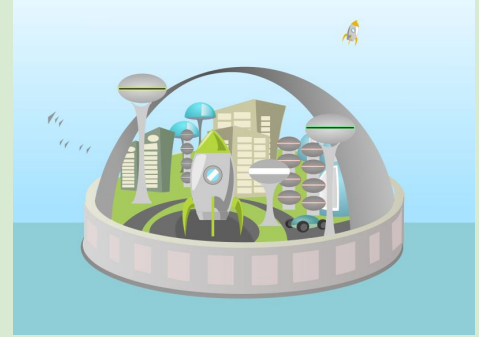
On A3 paper, please present ***A poster exploring at least one island, exploring its location and unique geography across people, places and environments.***

Hand these in (electronically or on paper) by September 5th.

**All entries must:**

- Be well-presented, colourful and informative
- Have excellent spelling, punctuation and grammar
- Use accurate geographical terminology
- Be original and independently produced
- If electronic: minimum font size of point 10
- No 3D tabs, flaps or hidden information

Do not write your name or school on the front - please write them on the back. Only use copyright-free images (e.g. Pixabay)



You will find all the instructions, lots of ideas and everything you need to help you on Google Classroom. (code: t64s2mm)

# Overcrowding, Santa Cruz del Islote (off Colombia)



Also:  
Kiribati,  
Caye Sable, Haiti  
Malé, Maldives

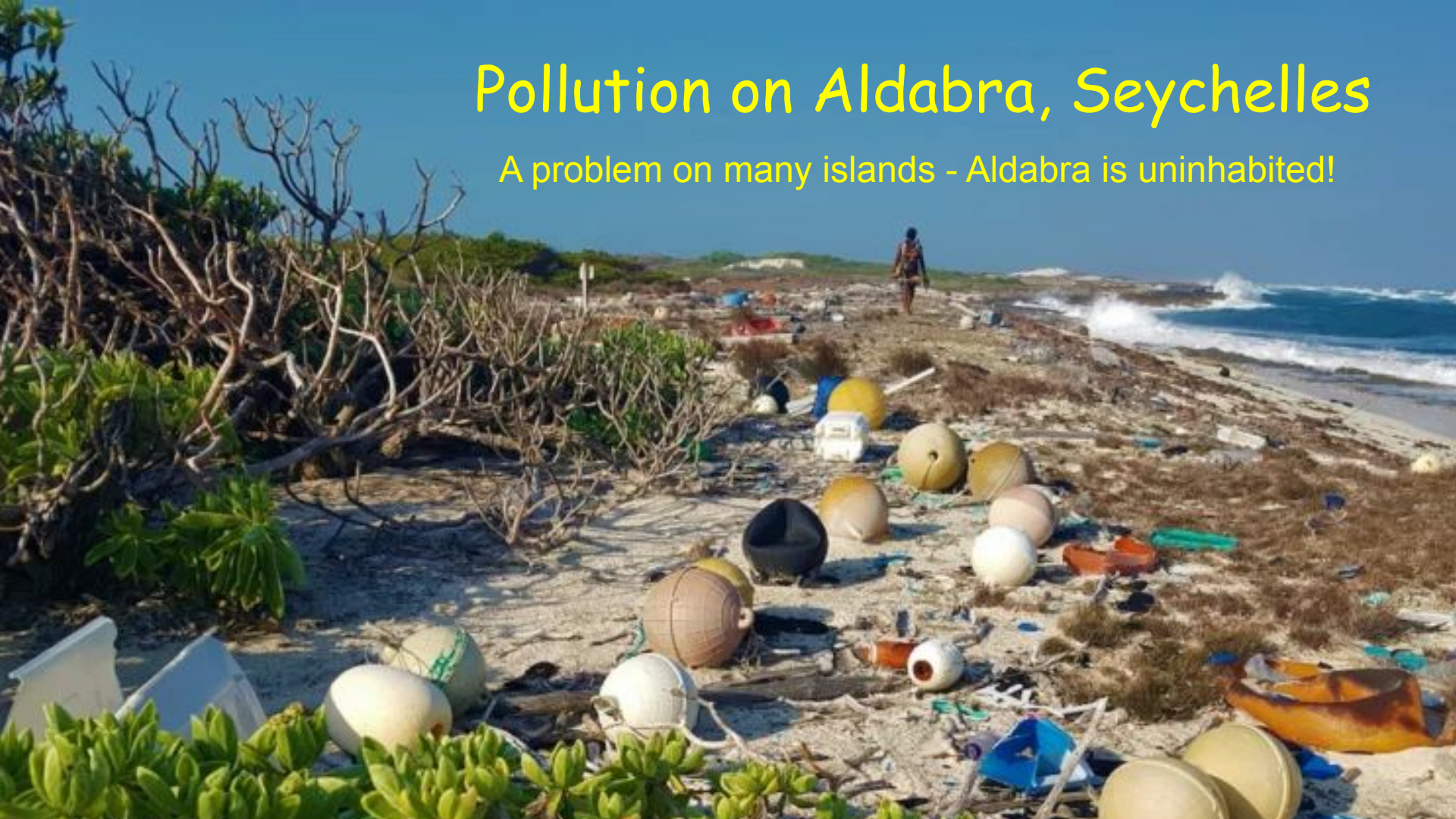
# Rising sea levels, Tuvalu



Also:  
Maldives,  
Kiribati,  
Marshall Islands

# Pollution on Aldabra, Seychelles

A problem on many islands - Aldabra is uninhabited!



Bali, Indonesia



Canary Islands, Spain



Santorini, Greece



## Overtourism

Boracay, Philippines



# Poverty and deforestation in Madagascar



These are both problems on many islands

A problem on many islands



Water scarcity, Granada

Remember - we live on an island, too, you could  
always choose Great Britain!

